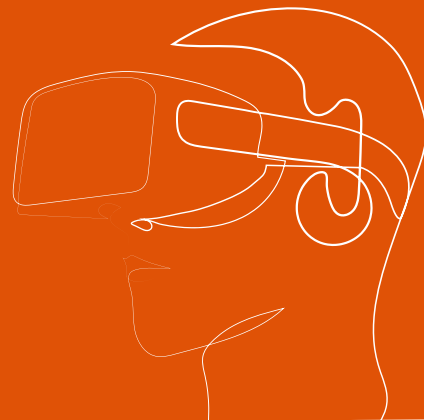


DIRECTIONS TO NLO EDE



Visiting address
Bennekomseweg 43
6717 LL Ede
T (0318) 707 000
F (0318) 707 007

By car

From Utrecht/Arnhem (A12)

Take exit 24 Wageningen/Bennekom/Ede. Turn right towards Ede and pass under shopping centre Stadspoort. Continue this road and follow the road signs for 'De Reehorst'. Turn right into the Tooroplaan. Turn right again at the end of the road, onto the Bennekomseweg. Follow this road. Turn left at the roundabout and take the first street on your left. Continue along this street, called 'Horapark', until you see a dead-end street on your left (after approx. 200 meters). Turn into this street and continue for about 50 meters. Our office is situated on the left side at number 43 (ground floor).

From Amersfoort (A30 motorway)

Take exit 15 Barneveld on the A1 and continue on the A30. Take exit 2 for Ede and turn left, in the direction of Ede. Take a right turn at the second junction with traffic lights in the direction of Ede. Follow the road signs for "De Reehorst". Turn right into the Tooroplaan. At the end of the road, turn right, onto the Bennekomseweg. Continue on this road, pass under the railway line and after approx. 200 meters turn left at the roundabout. Then take the first street on your left. Continue along this street, called "Horapark", until you see a dead-end street on your left (after approx. 200 meters). Turn into this street and continue for about 50 meters. Our office is situated on the left-hand side at number 43 (ground floor).

From Zwolle/Apeldoorn (A50 - A12 motorway)

Take the A50 and head towards Arnhem. At Arnhem, take the A12 in the direction of Utrecht. Then follow the directions given above for Utrecht/Arnhem (A12).

By public transport

Our office is located about 10 minutes walk from the Ede-Wageningen railway station. When leaving the train platform go down the stairs and turn left, this is the Bennekomseweg. Our office (number 43, ground floor) is situated on your left after approx. 800 meters.



EUROPEAN PATENT AND
TRADEMARK ATTORNEYS

www.nlo.eu